



اورينت تيك ف.م.م.

ORIENT TECH W.L.L.

"Trusted partner for all your storage solutions"

www.orienttech.com.qa



PRODUCT CATALOGUE

Pallet Racking | Shevling System

Manul Handling Equipment



+974 4451 2997



+974 5596 2148



P.O.BOX. 201813 DOHA | QATAR



info@orienttech.com.qa

salesracking@orienttech.com.qa





أورينتك ذ.م.و.
ORIENT TECH W.L.L.

"Trusted partner for all your storage solutions"

Orienttech W.L.L. is a well established and fast growing trading companies in the country of Qatar and Bahrain. Our line of business involves wholesale and Retail supply of Automotive spares, Racking and Shelving products.

Ensuring exceptional product and market knowledge the company excels in delivering objectives of customer satisfaction to the highest esteem. Orienttech W.L.L. represents an extensive range of major international brands and products each supported with dedicated sales team.

We are a team of professionals licensed, experienced and motivated to responsible and truthful performance. We as a team will be able to assist you in every facet of your task. Affordable cost and value for money products qualify our products and Services.



About Us



MISSION

Focus on innovation, positive experiences and corporate responsibility, the sum total of which, the company believes, will create "customer delight"



VISION

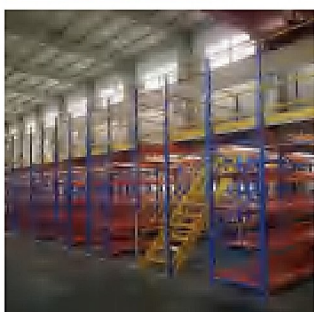
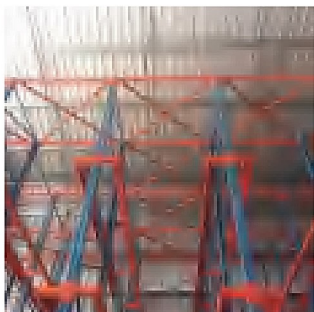
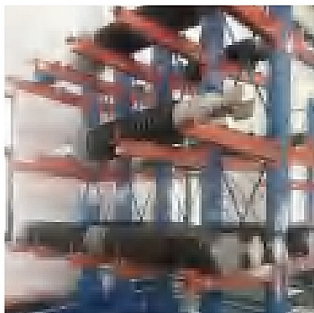
To be the most passionately preferred trading and project company.



OUR CORE VALUES

- Teamwork through Trust & Respect.
- Integrity.
- We conduct business in an honest and straightforward manner.
- Commitment to Customer Enthusiasm.
- Passion for Winning.
- Accountability at all Levels.
- Commitment to Continuous

CONTENTS



01 Pallet Racking

Selective Pallet Racking

Drive In/Thru Racking

VNA Pallet Racking

Double Deep Pallet Racking

Radio Shuttle Racking

Gravity Pallet Racking

Push Back Racking

02 Shelving System

Medium Duty Shelving

Boltless Shelving

Slotted Angle Shelving

Compactor Mobile Shelving

03 Multi-tier Mezzanine Racking

04 Structural Platform

05 Cantilever Racking

06 Manual Handling Equipment

Plastic Bin

Plastic Pallet Plastic Upright

Plastic Upright Guard

Stacking Racking

Wire Mesh Container

Steel Pallets

Steel Locker

Pallet Jack&Forklift

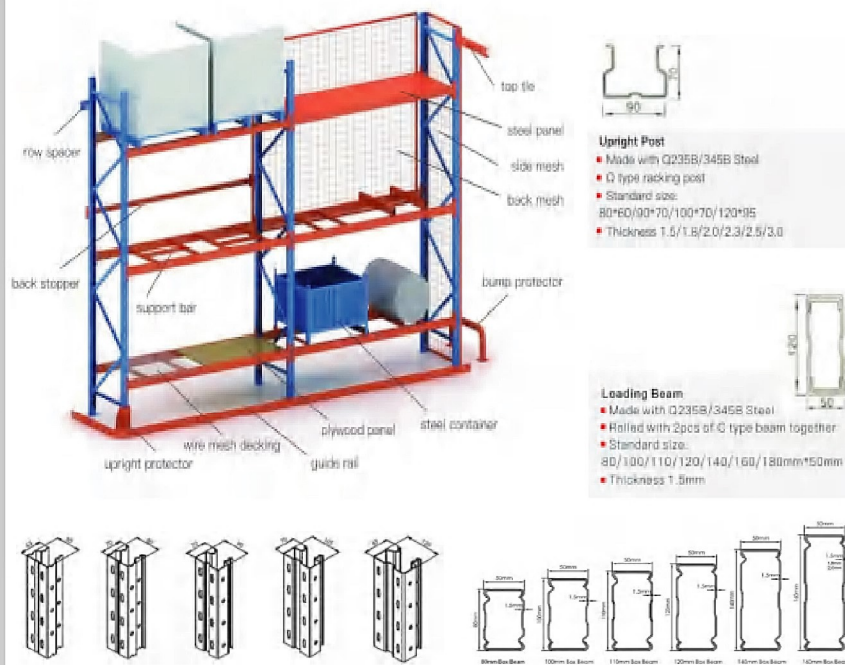


اورینٹ ٹیک ڈ.م.م

ORIENT TECH W.L.L.

"Trusted partner for all your storage solutions"

Selective Pallet Racking



Selective racking is the most economical storage racking system, and allows direct access to all different types of pallets.

It is easy to install, simple to adjust, and can be accessed with most types of forklift trucks.

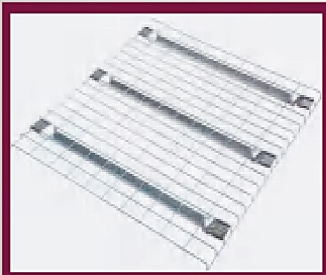
Features

- Because of its total selectivity, this form of storage system is ideally suited to warehouses of all types and sizes.
- Frames and beams are assembled to provide storage levels that suit the dimensions of the product and packaging so that all pallets are directly and easily accessible at all times.

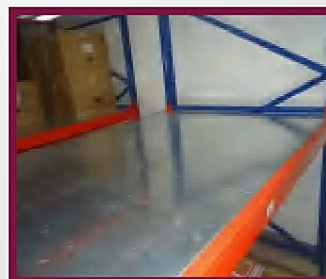
Racking Accessories

Wire mesh decking is widely used together with selective pallet racking. And it allows maximum lights and air circulation. And capacity of wire mesh decking is 500kg-2000kg per level.

G.I Decking Panel for pallet racking system can be designed for box beam, step beam.



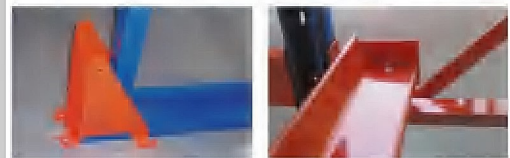
Plywood Support Bar is suitable to provide supports for plywood decking. Normally 4 or 6 nos supports support the wooden decks.



Drive In/Thru Racking



**First In /
First Out**

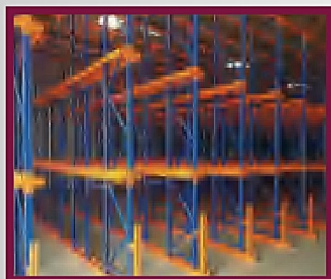


**First In /
Last Out**

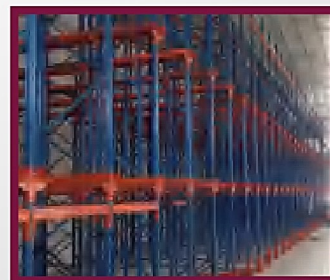
Drive In Racking is the ideal storage solution for bulk storage of palletised loads and can provide up to 70% more storage capacity within the same available floor space.

LIFO Racking- Drive In Racking System has one entrance it can be called Last In, First Out Racking. As there is one entrance, the last pallet stored in the bay is the first to be taken out.

FIFO Racking- Drive Thru Racking System using two entry points, it's called First In, First Out Racking. Using a FIFO system, pallets that are loaded in are pushed to the opposite end --The first pallet loaded in a row is the first to be unloaded at the other end.



Cold Storage drive in racking system, in the cold warehouse, drive in rack is always used for warehouse storage. The temperature can be -30°C



L type guide rail

U type guide rail

Guide rail is an important accessory in drive in/thru racking system.

The usage of guide rail provides the protection from the forklift when operation in the racking system.

VNA Pallet Racking



VNA RACKING is one type of pallet racking but the aisle is very narrow, normally aisle can be designed with 1.6m to 1.8m width, and height can be designed with 10m high. The rackings are usually accessed by vna forklift for 3-ways goods load & unload. And ground guide rails are installed to help improve the working efficiency.

Double Deep Pallet Racking



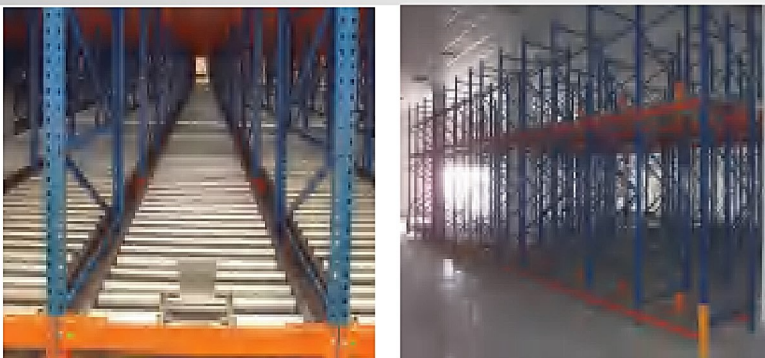
Double deep pallet racking is a racking system with shelves that are double the depth of a standard pallet. The additional depth means that pallets can be stacked two deep, essentially doubling the storage space of a standard racking system while maintaining the number of aisles. It is an economical way to maximise storage capacity in your warehouse.

Radio Shuttle Racking



Radio shuttle racking is a high density automatic racking system, including racking, pallet runners, forklifts compared with pallet racking, drive in racking, vna racking, it is high working efficiency and high storage capacity. It is a perfect solution for drive in rack using in cold storage, food, chemical, tobacco and beverage industry and other low level of SKU

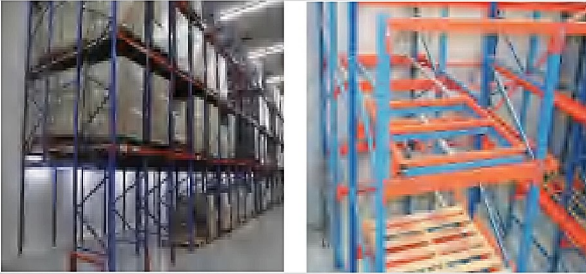
Gravity Pallet Racking



Gravity Pallet Racking is a high density pallet racking system that reduces the need for aisles while maintaining effective product rotation. It uses an industrial poly track on incrementally lowered beams in order to automatically rotate products loaded into the back of the system towards the front.

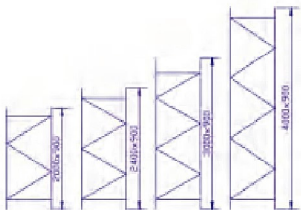
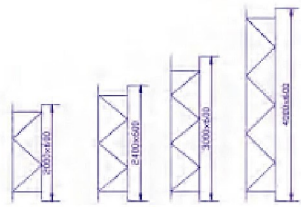
Pallet flow is a FIFO pallet racking system as pallets are loaded into the back of the system and unloaded from the front.

Push Back Racking



Push Back Racking is the combination of drive in racking and gravity pallet racking. Normally providing 4 pallets deep at most, and 3-4 pallets high. Push back rack increase the storage density because of utilising available space by depth and reducing the aisle space.

Medium Duty Shelving



Medium Duty Shelving is an affordable shelving solution that can be customised for the storage of a wide range of items of varying weights. Load capacity for each level is about 300kg-800kg. And each beam level can be adjusted with 50mm pitch.

Metal shelf, galvanized decking panel, wire mesh deck, wooden deck can be used for medium duty shelving system.

Medium Duty Shelving

SIZE			LEVELS	CAPACITY
H	D	L	NOS	KG
4000	600	2000	8	300-600
4000	600	2400	8	300-600
4000	900	2000	8	300-600
4000	900	2400	8	300-600
3000	600	2000	6	300-600
3000	600	2400	6	300-600
3000	900	2000	6	300-600
3000	900	2400	6	300-600
2400	600	2000	5	300-600
2400	600	2400	5	300-600
2400	900	2000	5	300-600
2400	900	2400	5	300-600
2000	600	2000	4	300-600
2000	600	2400	4	300-600
2000	900	2000	4	300-600
2000	900	2400	4	300-600

Boltless Shelving



Boltless shelving compared with medium duty shelving, the capacity per layer is smaller, about 150-150kg per level.

Boltless shelving is composed of upright, top/bottom beam, top/middle/bottom bracket, metal deck.

It is easy to assembly and disassembly with plastic hammer only, and no bolts&nuts are used during the installation.

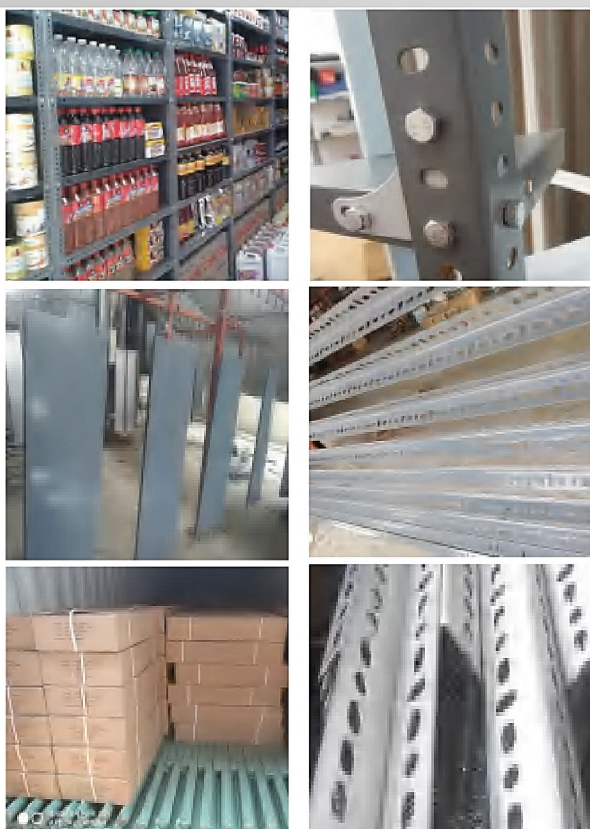
1.Upright 2.Top Beam 3.Bottom Beam 4.Top Bracket 5.Middle Bracket 6.Bottom Bracket 7.Metal Deck



اورينتك ذ.م.ش.
ORIENT TECH W.L.L.

"Trusted partner for all your storage solutions"

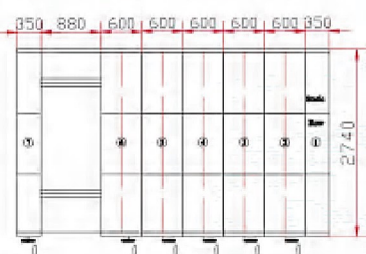
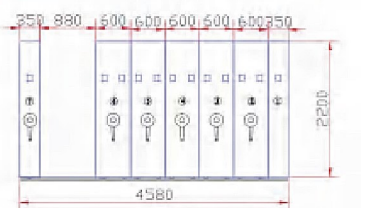
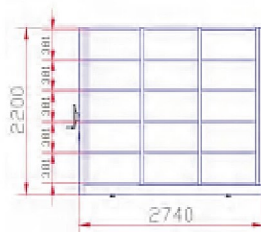
Slotted Angle Shelving



Slotted Angle Shelving is a simple, cost efficient shelving system for storage any items. Max load capacity of each level will be 300kg. Different sizes are available for your requirement. With a wide range of heights, depths and lengths, Slotted Angle is a quick and easy storage solution for stores, workshops, warehouse and wherever a cost effective and easily assembled shelving unit makes a difference.

Slotted Angle Shelving				
Item Name	Size(mm)			Thickness(mm)
Post Height	2000	2400	3000	40x40 1.5-2.0
Shelf size	900x300	900x300	900x300	0.9mm-1.2mm No support& With support
	900x400	900x400	900x400	
	900x450	900x450	900x450	
	900x600	900x600	900x600	
	1200x300	1200x300	1200x300	
	1200x400	1200x400	1200x400	
	1200x450	1200x450	1200x450	
	1200x600	1200x600	1200x600	

Compactor Mobile Shelving



Components of Mobile Shelving

- ◆ Front Panel
- ◆ Driven System
- ◆ Safety System
- ◆ Locker
- ◆ Divider Panel
- ◆ Shelf Support
- ◆ Shelf
- ◆ Frame
- ◆ Base
- ◆ Guide Rail
- ◆ Back Panel
- ◆ Front Door



Mobile shelving offers maximum filing and storage capacity in the available space without compromising access. The units provide optimum filing capacity for the modern office or the heavy demands of storerooms.

It consists of a secured enclosed shelving unit on a track at one end and a series of enclosed lockable shelving units that slide to allow access to contents within them and save aisle space.

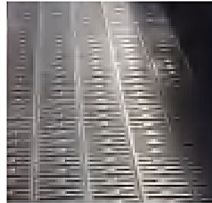
Mobile shelving consists of base, frame, driven system, safety device. Frame includes upright, shelf, panel, hanging panel, roof panel, etc.



Multi-tier Mezzanine Racking



Steel Flooring for catwalk way



Galvanized steel flooring



Galvanized punched hole flooring

Multi-tier Mezzanine Racking maximizes all available vertical space and are ideal for storing a wide variety of packaged goods for hand picking. It is the ideal solution for the utilizing of the warehouse's height and space.

Multi-tier mezzanine racking offers a very cost-effective solution for warehouse. It is built with selective pallet racking and shelving system. And walkway used for workers to walk for the order picking.

Advantage of Multi-tier Mezzanine Racking

- Maximized the vertical space
- Different types storage requirement can be used together
- Ideal solution for archive storage
- Manual order picking applications

Accessories for Mezzanine



Handrails



Powder coated flooring



Powder coated punched hole flooring

Safety Mesh



Back Mesh



Side Mesh

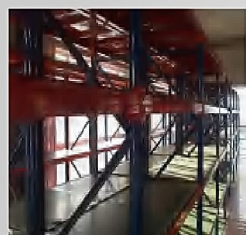
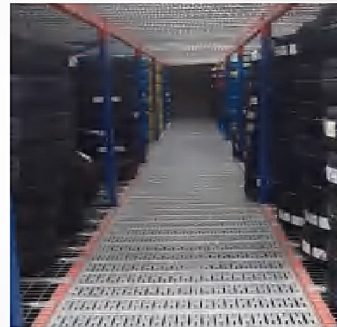


Staircase



Ramp

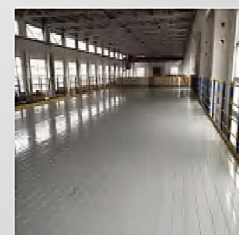
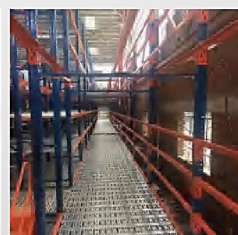
Mezzanine racking for tyres



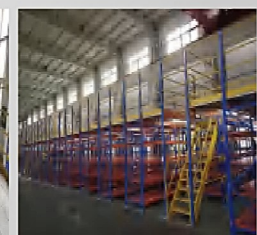
Shelving Supported Mezzanine Racking



Pallet Racking Supported Mezzanine Racking



Racking Supported Open Mezzanine



اورينت تيك و.ل.ل.
ORIENT TECH W.L.L.

"Trusted partner for all your storage solutions"

Structural Platform

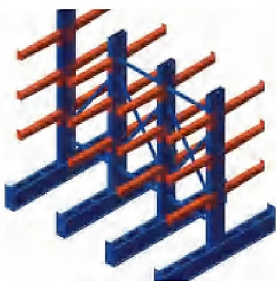


Structural Platform is a type of mezzanine platform supported by columns and structural beams (main beam & sub beam), thus the capacity of flooring is much heavier than rack supported mezzanine floor. It requires less columns and space between columns is longer. Platform levels can be designed with 2 or 3 levels and platform flooring always use steel flooring, galvanized grating or wooden flooring.

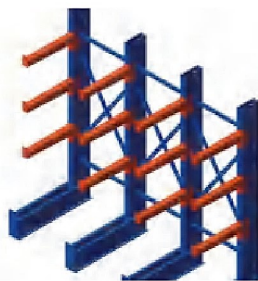
Advantage

- Increase the height of storage and space utilization
- Divided by 2-3 floors as usual which can carry 250-1000kg per square meter
- Easy-installation & Easy Dismantle: all components are bolted, attached with flooring to build the second floor and third floor.
- Various floor type, checker plate, perforated plate, flat plate, grid flooring to fit different application.

Cantilever Racking



Double side Cantilever



side Cantilever

Cantilever racking is ideal storage solution for storing long and odd-sized items with exceptional load-bearing capacity. There are multiple possible configurations including either a single or double-sided cantilever rack including a large variety of sizes, giving your warehouse storage the opportunity to be tailored to maximize the space you have available. Effective and well-organized cantilever racking systems are an essential part of today's logistics and warehousing.

Feature & Advantage

1. the height of Cantilever Column can be reach to 6500mm, the height is from 3500mm to 6500mm;
2. Single side base and double side base, the single side base can be reach to 1800mm, the double sides base can be reach to 3600 mm;

Cantilever Racking			
Item Name	Light Duty	Heavy Duty	Photo of Cantilever
Column	200x60/80x2.0/2.5	300x90x2.5/3.0	
Arm	Box 80/100/120	H90/120/150/180/210 300x90x2.5/3.0	
Base	200x60/80x2.0/2.5	H200x100x5.5x8.0 H300x150x6.5x9.0	
H Bracing	50x30x1.5	50x30x1.5	
	50x40x1.5	50x40x1.5	
X Bracing	Φ25x1.5	Φ25x1.5	
Stop Pin	3# angle	3# angle	
	H100-H200	H100-H200	



اورينت تيك ذ.م.م.
ORIENT TECH W.L.L.

"Trusted partner for all your storage solutions"



3. Straight arm length is available from 500mm to 2000 mm with safety pins; it is possible to accommodate variety of items
4. Completely adjustable CANTILEVER RACKS is adjusted as per 100mm space;

Manual Handling Equipment

Plastic Bin

1. Hanging Plastic

Hanging Plastic Bins						
Model No	Size (outer)	Size (inner)	Volume	Load Capacity	Carton Size	Package
L110	110x105x52	95x90x45	0.26	2	380x225x240	48
L140	140x105x75	120x90x65	0.38	2	450x230x300	48
L190	190x105x75	170x95x65	0.57	3	450x230x400	48
L220	220x140x125	200x120x115	1.56	6	580x300x470	36
L270	270x140x125	250x120x115	1.96	8	630x300x570	36



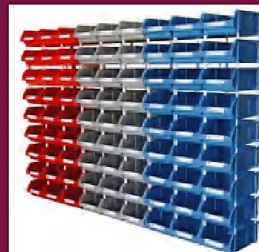
Fixed Hanging Rack



Mobile Hanging Rack

2. Stackable Plastic Bins

Stackable Plastic Bins					
Model No	Size (outer)	Size (inner)	Specification Load Capacity	Carton Size	Package
L195	195x120x195	158x93x90	4	615x390x585	80
L250	250x150x105	205x125x100	7	635x490x475	48
L305	305x190x120	250x155x115	13	615x420x570	24
L380	380x235x145	310x195x140	18	745x505x455	16
L450	450x200x180	380x150x170	20	880x470x555	16
L450	450x300x180	380x250x170	24	960x470x555	12
L510	510x350x200	425x275x195	30	760x540x630	8
L600	600x400x220	550x350x215	40	845x630x700	8



Divided Plastic Bins



Stackable bin with support column

3. Divided Plastic Bins

Divided Plastic Bins					
Model No	Size (outer)	Size (inner)	Specification Load Capacity	Carton Size	Package
L3109	300x117x90	260x94x80	4	610x480x530	48
L4109	400x117x90	360x94x80	9	710x410x530	36
L5109	500x117x90	460x94x80	8	710x510x530	36
L6109	600x117x90	560x94x80	10	610x480x530	24
L3209	300x235x90	260x211x80	8	610x480x530	24
L4209	400x235x90	360x211x80	12	710x410x530	18
L5209	500x235x90	460x211x80	16	710x510x530	18
L6209	600x235x90	560x211x80	15	610x480x530	12
L3214	300x235x140	260x211x129	12	610x480x530	16
L4214	400x235x140	360x211x129	15	710x410x570	12
L5214	500x235x140	460x211x129	20	710x510x570	12
L6214	600x235x140	560x211x129	25	610x480x570	8



Plastic Upright Guard



Plastic Pallet



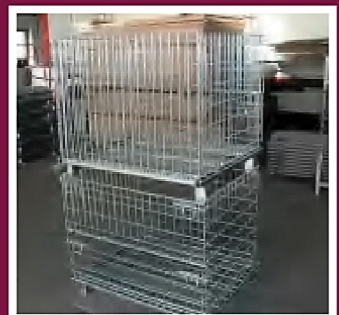
Stacking Rack



Plastic Container

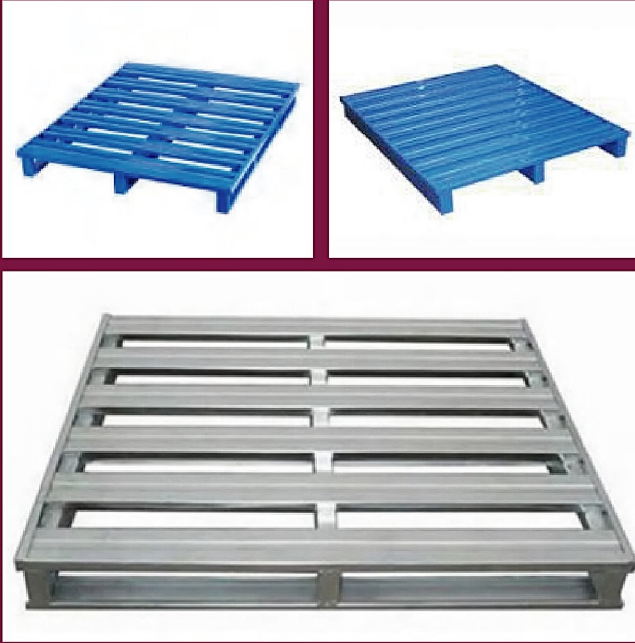


Wire Mesh Container



Item	External Size L×W×H(mm)	Wire (mm)	Mesh(mm)	Load Bearing (kg)	Stacking (Layers)	Estimated Weight(kg)	20'GP(pcs)	40'GP(pcs)
A-5	1000*800*840	5.0	50*50	1200	4	43	238	462
B-5	1000*800*840	5.4	50*50	1500	4	52	238	462
B-5 1/2	1000*800*500	5.4	50*50	1000	4	40		
C-5	1000*800*840	5.0	50*50	1000	4	40	238	462
S-5	1000*800*840	5.4	50*100	1000	4	46	238	462
PS-5	1000*800*840	5.0	50*100	1000	4	43	238	462
A-7	1200*1000*890	5.0	50*50	1500	4	62	140	315
B-7	1200*1000*890	5.4	50*50	2000	4	74	140	315
S-7	1200*1000*890	5.4	50*100	1000	4	63	140	315
PS-7	1200*1000*890	5.0	50*100	1000	4	57	140	315
A-3	800*600*640	5.0	50*50	800	4	30	382	784
C-2	800*500*540	5.0	50*50	500	4	24	992	784

Steel Pallet



Steel Locker



Pallet Jack & Forklift





P.O.BOX. 201813 DOHA | QATAR

+974 4451 2997

+974 5596 2148



info@orienttech.com.qa
salesracking@orienttech.com.qa



THANK YOU

www.orienttech.com.qa

